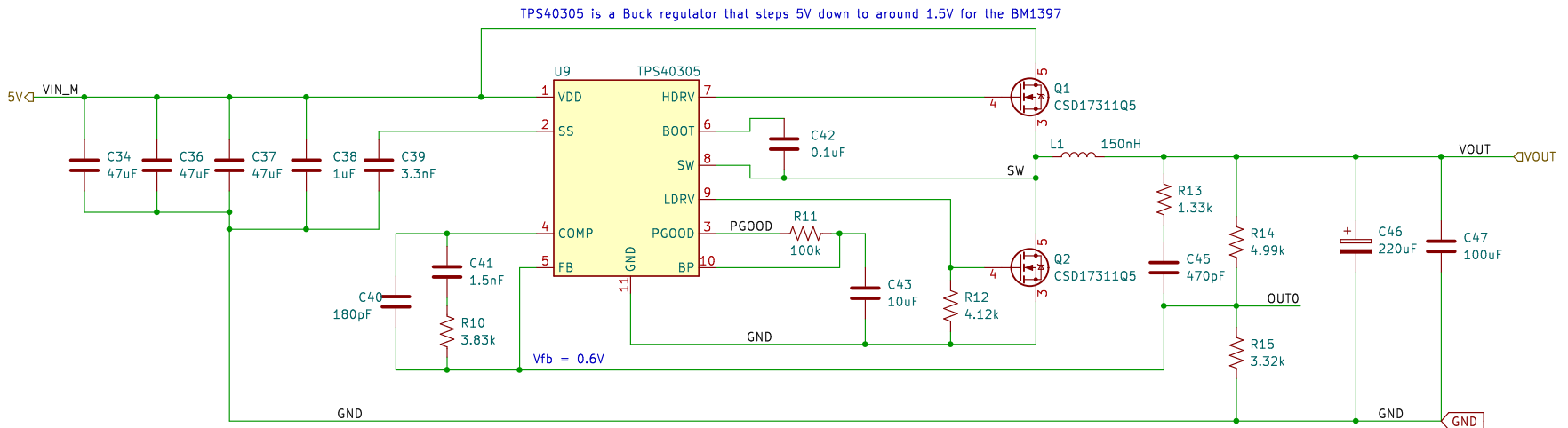


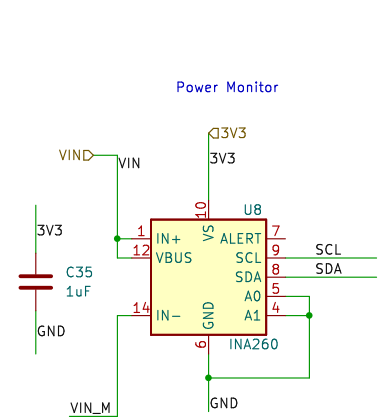
-  H1 AlignmentHole
-  H2 AlignmentHole
-  H3 AlignmentHole
-  H4 AlignmentHole
-  H5 MountingHole
-  H6 MountingHole

bitaxe, yo

Sheet: /	
File: bitaxeUltra.kicad_sch	
Title: le bitaxeUltra	
Size: A	Date: 2023-07-10
KiCad E.D.A. kicad 7.0.7	Rev: 0
	Id: 1/5

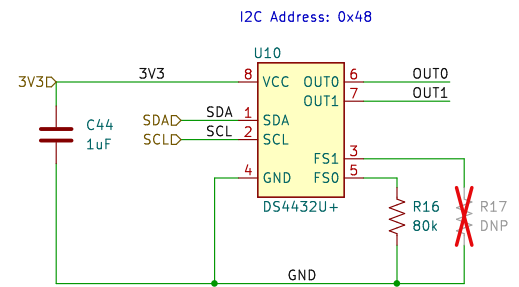
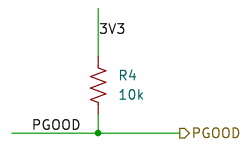


This jumper will let you bypass the power meter



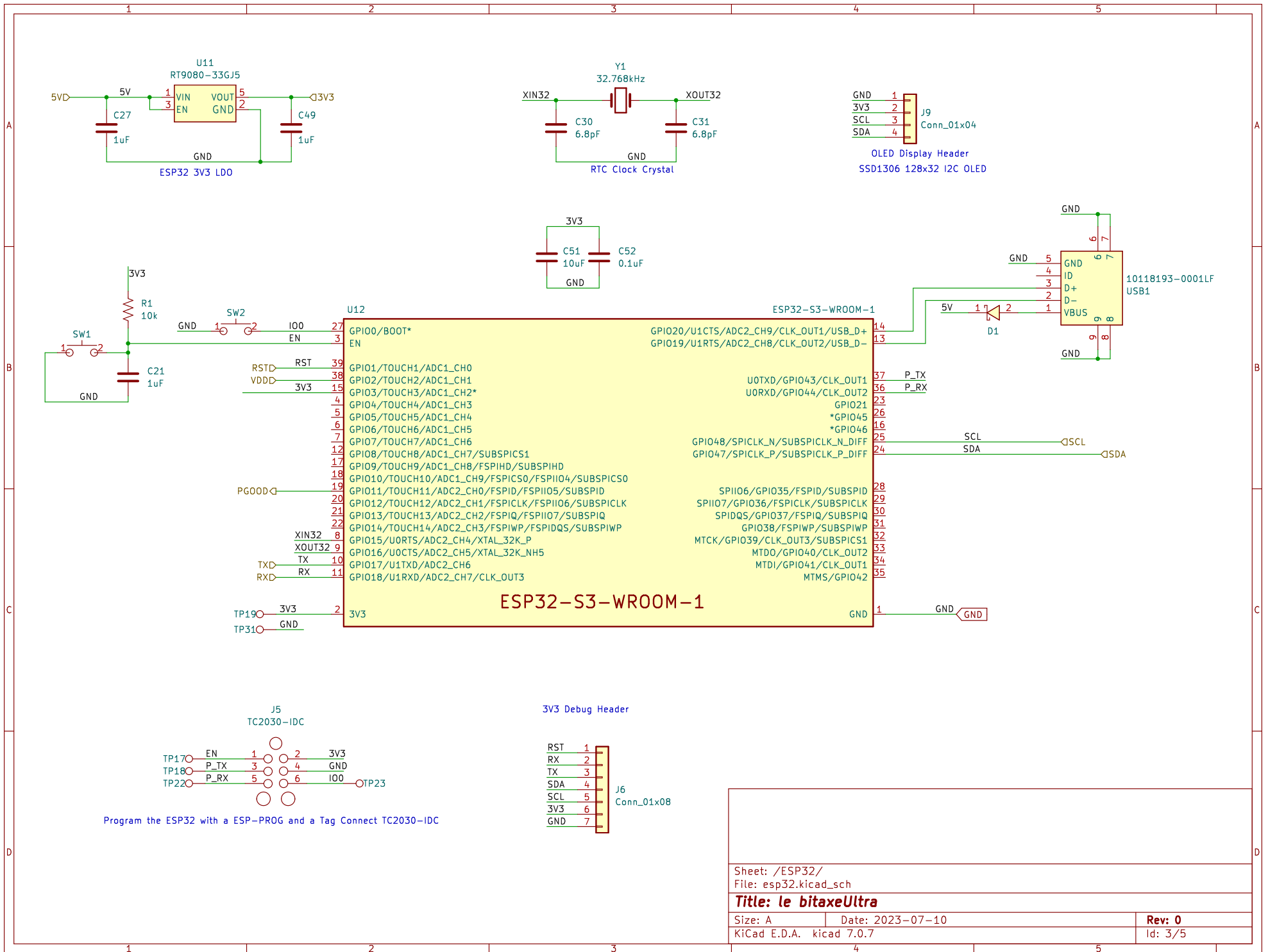
I2C Address: 0x40

The INA260 is currently out of stock everywhere. This part is totally optional, feel free to leave it out if you can't source it. If you DNP it, close J7

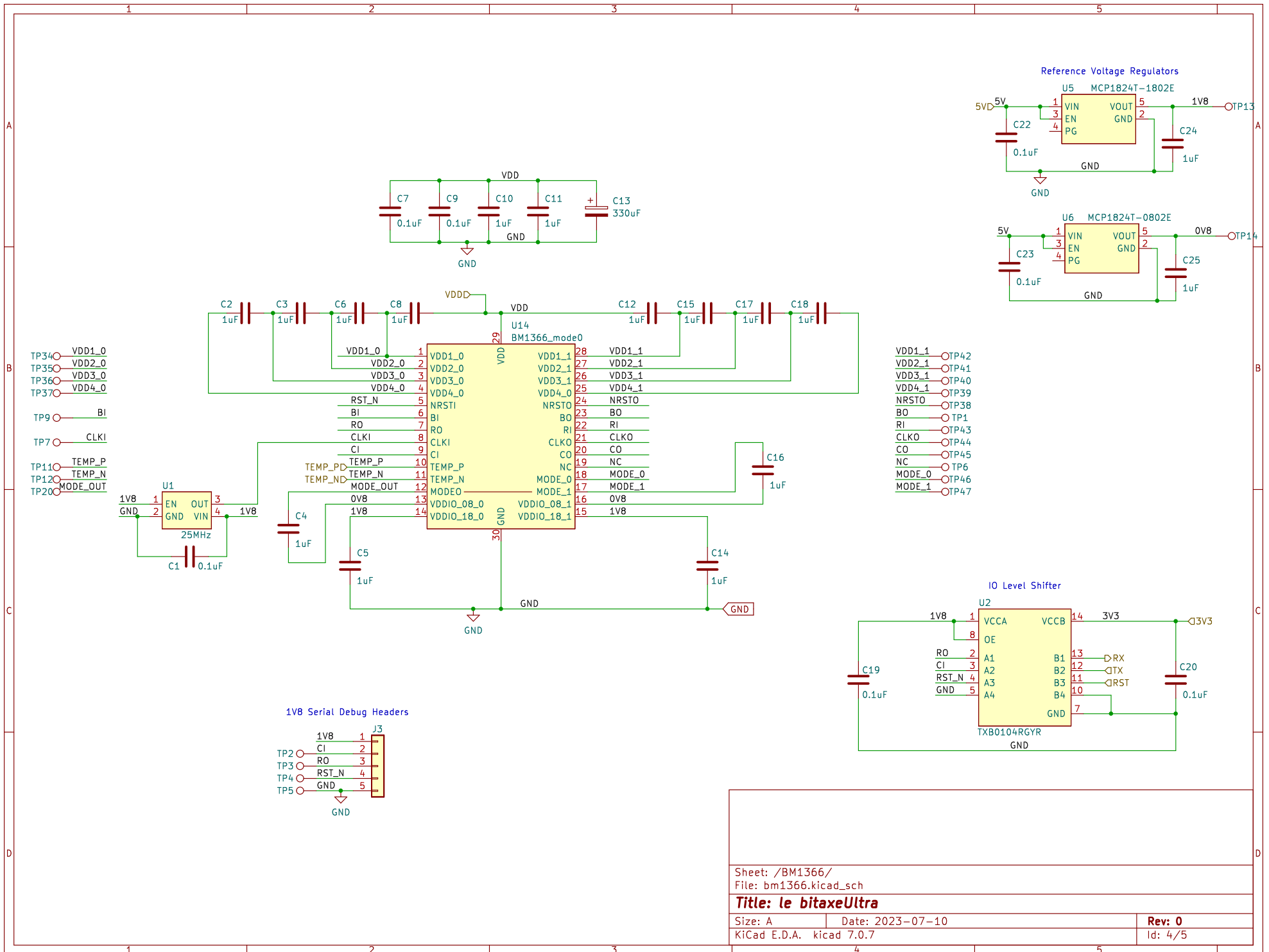


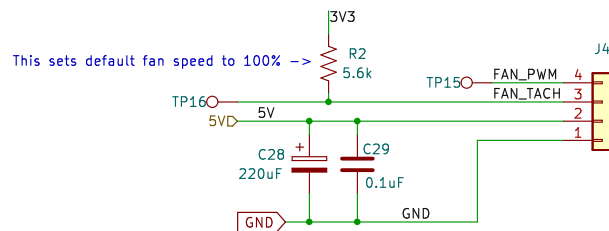
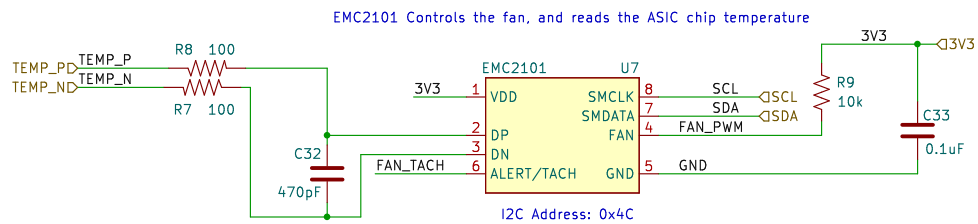
DS4432U+ Lets us change the TPS40305 voltage over I2C

Sheet: /Power/		File: power.kicad_sch	
Title: le bitaxeUltra			
Size: A	Date: 2023-07-10	Rev: 0	
KiCad E.D.A.	kicad 7.0.7	Id: 2/5	



Sheet: /ESP32/	
File: esp32.kicad_sch	
Title: le bitaxeUltra	
Size: A	Date: 2023-07-10
KiCad E.D.A. kicad 7.0.7	Rev: 0
	Id: 3/5





Sheet: /Fan/
File: fan.kicad_sch

Title: le bitaxeUltra

Size: A Date: 2023-07-10
KiCad E.D.A. kicad 7.0.7

Rev: 0
Id: 5/5